

Municipal Resiliency

A Short Tale of Two Projects

1



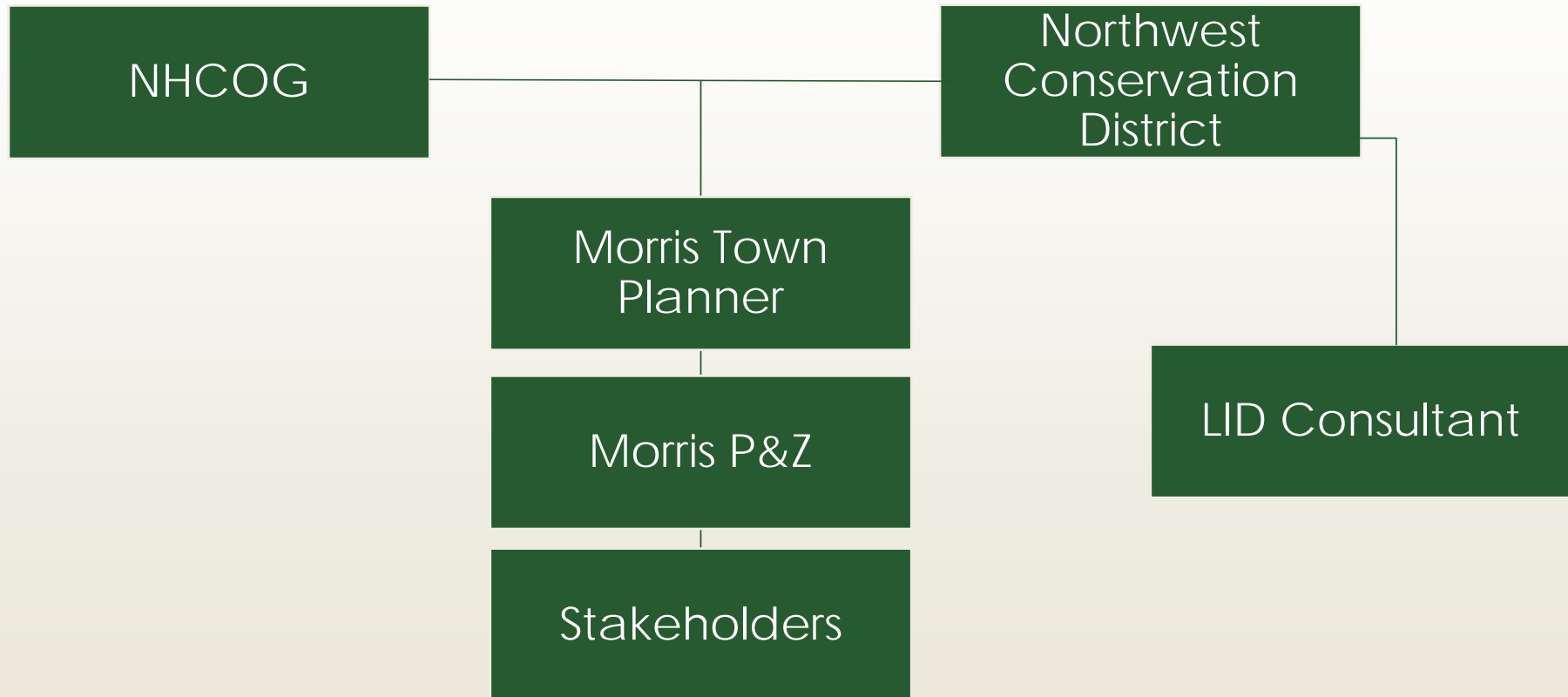


Low Impact Development

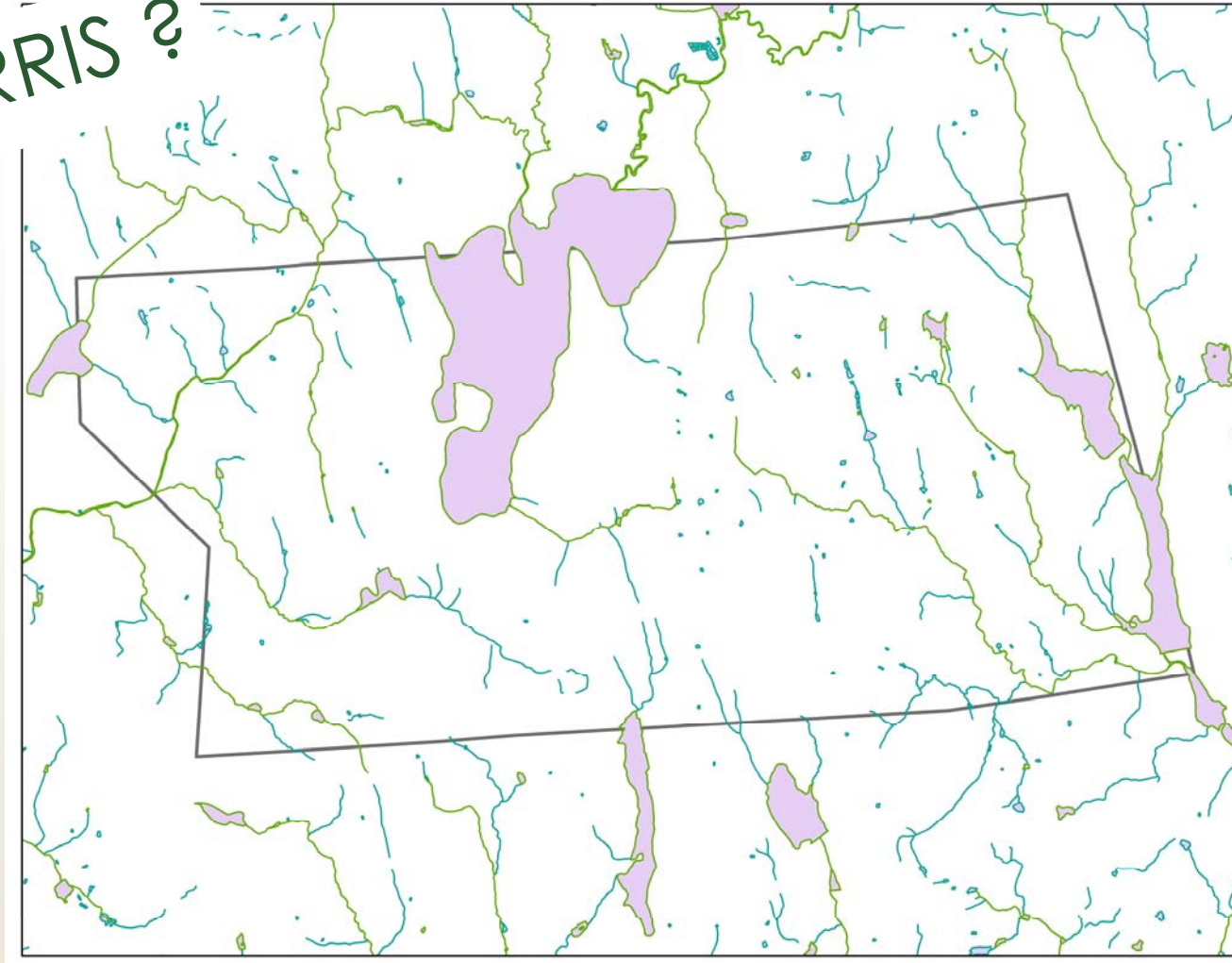
Rural Resiliency Vision & Toolkit

Focused on municipal scale
Addresses local vulnerabilities
Uses local capacity
Replicable/Transferable to other towns
Reflects needs of rural towns

Low Impact Development Design Manual Project



WHY MORRIS ?



Joanna Wozniak-Brown, "Municipal Resiliency: A Short Tale of Two Projects", Creating a Resiliency Connecticut: A CIRCA Forum on Science, Planning, Policy & Law, May 11, 2018. Hartford, CT.

Education

- ❖ Presentations about project to interest groups
- ❖ Outreach to design/build and local contractors
- ❖ Demonstration at Morris Public Works
- ❖ Coordinate with local officials, local commissions (P&Z, IW, CEO)
- ❖ Present at NHCOC monthly meeting and outreach to regional P&Z

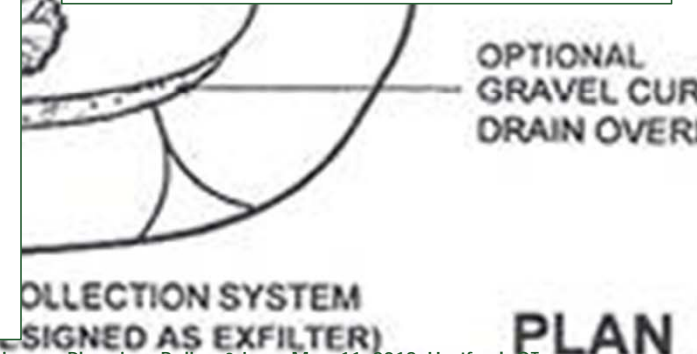
PARKING LOT SHEET FLOW

Design Manual

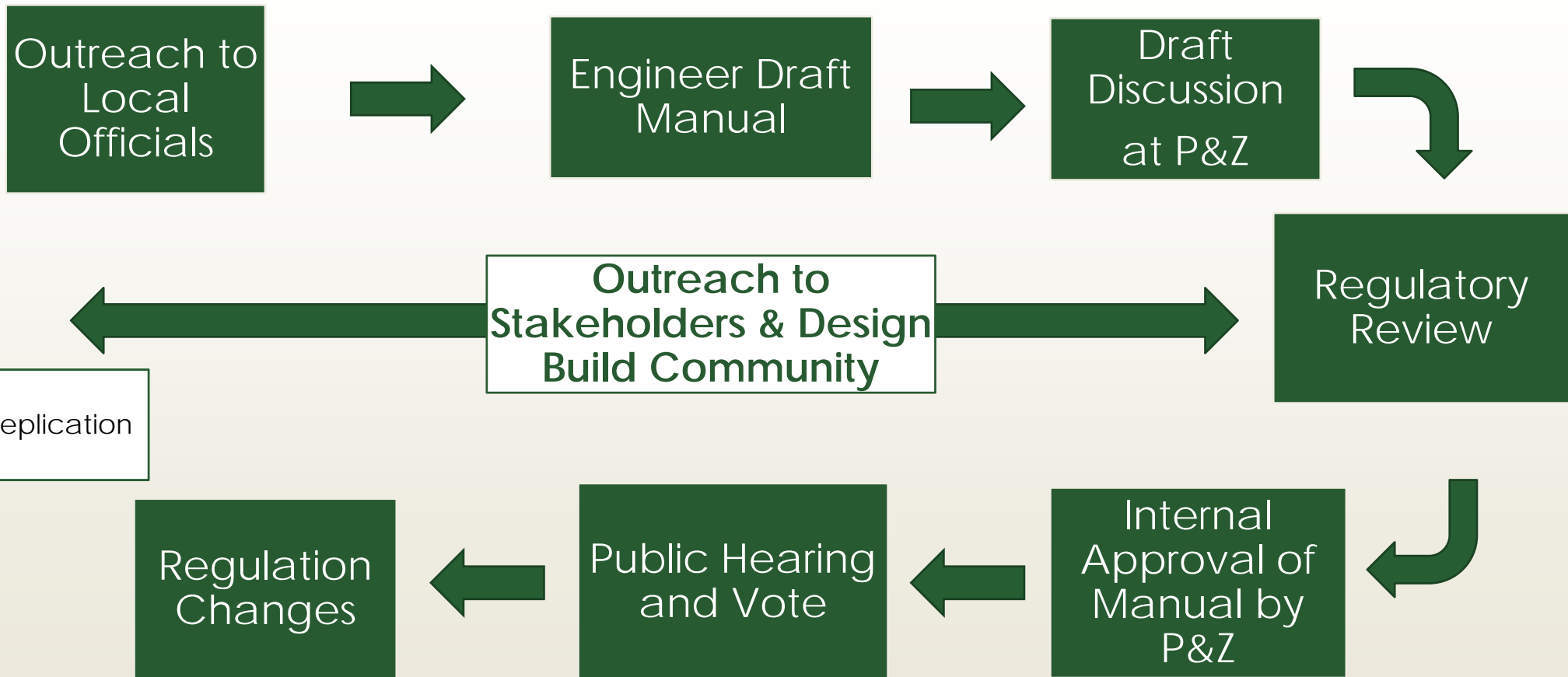
- ❖ Town specific parameters i.e. 700" buffer around Bantam Lake
- ❖ Overview of stormwater management, LID design
- ❖ Specifications for construction & maintenance for LID system
- ❖ Sample maintenance agreements
- ❖ Planting specifications
- ❖ LID system-wide contaminant load reduction calculations

Regulatory Process

- ❖ Review local regulations for conflicts
- ❖ Establishes criteria for decisions
- ❖ Identify replication to other town opportunities
- ❖ Coordinate with other town commissions



Manual Creation





Rural Resiliency Vision & Toolkit

Jessica Wozniak-Brown, "Municipal Resiliency: A Short Tale of Two Projects", Creating a Resiliency Connection: A CLEA Forum on Science, Planning, Policy & Law, May 14, 2018, Hartford, CT

Rural Resiliency Vision & Toolkit

- ❖ Develop Rural Resiliency Vision
- ❖ Connect with stakeholders to enrich vision
- ❖ Review local, regional, and state documents for general resiliency concepts and specific strategies
- ❖ Develop toolkit with practical adaptation strategies within municipal or on-site control
- ❖ Maintain resilientrural.com with Toolkit
- ❖ Develop 10 case studies of adaptations for vulnerabilities from similar regions

Agriculture

Natural
Resources

Public Health

Infrastructure

Cultural
Resources

Thank you and for more information:



Joanna Wozniak-Brown, PhD, Regional Planner
Northwest Hills Council of Governments
jbrown@northwesthillscog.org
860-491-9884

Special Thanks to CIRCA!